

# Green

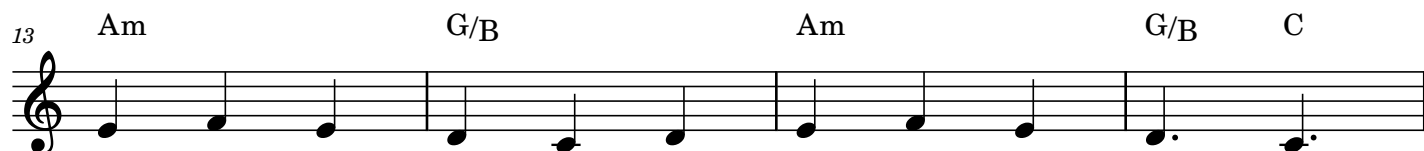
♩ = 156



When win - ter's gray is on the sky, rust u - pon the  
Wav - ing de - fi - ant pine tree boughs, ce - dar need - les,  
Death may raise its voice to - day; O, but Life will  
So keep it in your win - ter store, hang its gar - land



leaves that lie, red on the last few ber - ries cling - ing,  
stub - born and proud, hid - ing in - side the seeds of sum - mer,  
have its say, speak - ing in lov - ers and in chil - dren,  
'round the door, grant to your heart its hope - ful prom - ise,



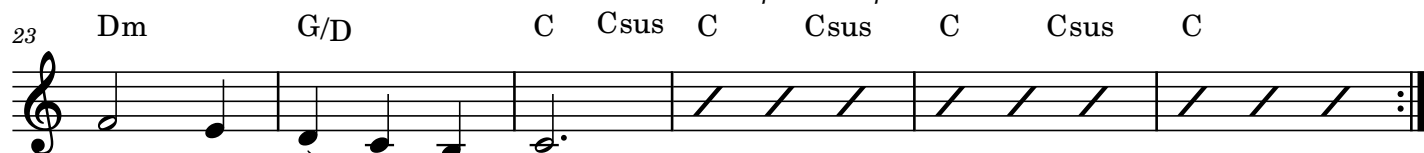
brown on the branch where the bit - ter wind's sing - ing—  
deep in the root where it sleeps un - der cov - er—  
in po - ets' pens and phil - os - o - phers' vis - ions.  
fash - ion a wreath for its bles - sing up - on us.

*Intro begins here*



E - ven when white ob - scures the scene, still, in  
Pa - tient - ly wait - ing there un - seen, in the  
Life is a plan - et's dar - ing dream: Earth's de -  
Win - ter brings browns and grays in - deed; but when it

*optional repeat between verses*



win - ter, there is green.  
win - ter, there is green.  
-vo - tion, spo - ken in green.  
comes, re - mem - ber green.

## Arrangement Permissions

👉 One-time Adaptation

👍 New Arrangement OK

🚫 Seek permission to arrange

Look at the Sing Out Love "Permissions" section for further explanation

# Green

♩ = 156

C<sub>b</sub>

C<sub>b</sub>

F<sub>b</sub>/A<sub>b</sub> G<sub>b</sub>/B<sub>b</sub>

C<sub>b</sub>

C<sub>b</sub>

G<sub>b</sub>/B<sub>b</sub>

When win-ter's gray is on the sky, rust u - pon the  
Wav-ing de - fi - ant pine tree boughs, ce - dar need - les,  
Death may raise its voice to - day; O, but Life will  
So keep it in your win - ter store, hang its gar - land

7

D<sub>b</sub>

G<sub>b</sub>

G<sub>b</sub>

C<sub>b</sub>

C<sub>b</sub>

C<sub>b</sub> G<sub>b</sub>

leaves that lie, red on the last few ber - ries cling-ing,  
stub-born and proud, hid-ing in - side the seeds of sum-mer,  
have its say, speak-ing in lov - ers and in chil-dren,  
'round the door, grant to your heart its hope - ful prom-ise,

13

A<sub>b</sub>m

G<sub>b</sub>/B<sub>b</sub>

A<sub>b</sub>m

G<sub>b</sub>/B<sub>b</sub>

C<sub>b</sub>

brown on the branch where the bit - ter wind's sing - ing—  
deep in the root where it sleeps un - der cov - er—  
in po - ets' pens and phil - os - o - phers' vis - ions.  
fash - ion a wreath for its bles - sing up - on us.

Words: Peter Mayer, b.1963

Music: Traditional French Carol

Arr. Peter Mayer & Adam Podd, b.1986

© Peter Mayer & Adam Podd

Sing Out Love expiration December 2028

Arrangement Permissions

One-time Adaptation

New Arrangement OK

Seek permission to arrange

Look at the Sing Out Love "Permissions" section for further explanation

Green - 2

*Intro begins here*

17

G $\flat$

C $\flat$

E $\flat$ m

A $\flat$ m

A $\flat$ m

F $\flat$ add9

E - ven when white ob - scures the scene, still, in  
Pa - tient - ly wait - ing there un - seen, in the  
Life is a plan - et's dar - ing dream: Earth's de -  
Win - ter brings browns and grays in - deed; but when it

*optional repeat between verses*

23

D $\flat$ m

G $\flat$ /D $\flat$

C $\flat$

C $\flat$ sus

C $\flat$

C $\flat$ sus

C $\flat$

C $\flat$ sus

C $\flat$

win - ter, there is green.  
win - ter, there is green.  
-vo - tion, spo - ken in green.  
comes, re - mem - ber green.

# Green

♩ = 156

B

B

E/G# F#/A#

B

B

F#/A#

When win-ter's gray is on the sky, rust u - pon the  
Wav-ing de - fi - ant pine tree boughs, ce - dar need - les,  
Death may raise its voice to - day; O, but Life will  
So keep it in your win - ter store, hang its gar - land

7

C#

F#

F#

B

B

B F#

leaves that lie, red on the last few ber - ries cling-ing,  
stub-born and proud, hid-ing in - side the seeds of sum-mer,  
have its say, speak-ing in lov - ers and in chil-dren,  
'round the door, grant to your heart its hope - ful prom-ise,

13

G#m

F#/A#

G#m

F#/A#

B

brown on the branch where the bit - ter wind's sing - ing -  
deep in the root where it sleeps un - der cov - er -  
in po - ets' pens and phil - os - o - phers' vis - ions.  
fash - ion a wreath for its bles - sing up - on us.

Words: Peter Mayer, b.1963

Music: Traditional French Carol

Arr. Peter Mayer & Adam Podd, b.1986

© Peter Mayer & Adam Podd

Sing Out Love expiration December 2028

Arrangement Permissions

One-time Adaptation

New Arrangement OK

Seek permission to arrange

Look at the Sing Out Love "Permissions" section for further explanation

# Green - 2

*Intro begins here*

17

F# B D#m G#m G#m Eadd9

E - ven when white ob - scures the scene, still, in  
 Pa - tient - ly wait - ing there un - seen, in the  
 Life is a plan - et's dar - ing dream: Earth's de -  
 Win - ter brings browns and grays in - deed; but when it

*optional repeat between verses*

23

C#m F#/C# B Bsus B Bsus B Bsus B

win - ter, there is green.  
 win - ter, there is green.  
 -vo - tion, spo - ken in green.  
 comes, re - mem - ber green.

# Green

♩ = 156

B♭

B♭

E♭/G F/A

B♭

B♭

F/A

When win-ter's gray is on the sky, rust u - pon the  
Wav-ing de - fi - ant pine tree boughs, ce - dar need - les,  
Death may raise its voice to - day; O, but Life will  
So keep it in your win - ter store, hang its gar - land

7

C

F

F

B♭

B♭

B♭

F

leaves that lie, red on the last few ber - ries cling - ing,  
stub-born and proud, hid-ing in - side the seeds of sum - mer,  
have its say, speak-ing in lov - ers and in chil - dren,  
'round the door, grant to your heart its hope - ful prom - ise,

13

Gm

F/A

Gm

F/A

B♭

brown on the branch where the bit - ter wind's sing - ing -  
deep in the root where it sleeps un - der cov - er -  
in po - ets' pens and phil - os - o - phers' vis - ions.  
fash - ion a wreath for its bles - sing up - on us.

Words: Peter Mayer, b.1963

Music: Traditional French Carol

Arr. Peter Mayer & Adam Podd, b.1986

© Peter Mayer & Adam Podd

Sing Out Love expiration December 2028

Arrangement Permissions

👉 One-time Adaptation

👍 New Arrangement OK

🚫 Seek permission to arrange

Look at the Sing Out Love "Permissions" section for further explanation

Green - 2

*Intro begins here*

17

F Bb Dm Gm Gm Ebadd9

E - ven when white ob - scures the scene, still, in  
Pa - tient - ly wait - ing there un - seen, in the  
Life is a plan - et's dar - ing dream: Earth's de -  
Win - ter brings browns and grays in - deed; but when it

*optional repeat between verses*

23

Cm F/C Bb Bbsus Bb Bbsus Bb Bbsus Bb

win - ter, there\_ is green.  
win - ter, there\_ is green.  
-vo - tion, spo - ken in green.  
comes, re - mem - ber green.

# Green

♩ = 156

A A D/F# E/G# A A E/G#

When win-ter's gray is on the sky, rust u - pon the  
Wav - ing de - fi - ant pine tree boughs, ce - dar need - les,  
Death may raise its voice to - day; O, but Life will  
So keep it in your win - ter store, hang its gar - land

7 B E E A A A E

leaves that lie, red on the last few ber - ries cling - ing,  
stub-born and proud, hid - ing in - side the seeds of sum - mer,  
have its say, speak - ing in lov - ers and in chil - dren,  
'round the door, grant to your heart its hope - ful prom - ise,

13 F#m E/G# F#m E/G# A

brown on the branch where the bit - ter wind's sing - ing -  
deep in the root where it sleeps un - der cov - er -  
in po - ets' pens and phil - os - o - phers' vis - ions.  
fash - ion a wreath for its bles - sing up - on us.

Words: Peter Mayer, b.1963  
Music: Traditional French Carol  
Arr. Peter Mayer & Adam Podd, b.1986  
© Peter Mayer & Adam Podd  
Sing Out Love expiration December 2028

## Arrangement Permissions

- One-time Adaptation
  - New Arrangement OK
  - Seek permission to arrange
- Look at the Sing Out Love "Permissions" section for further explanation



Green - 2

Intro begins here

17

E A C#m F#m F#m Dadd9

E - ven when white ob - scures the scene, still, in  
Pa - tient - ly wait - ing there un - seen, in the  
Life is a plan - et's dar - ing dream: Earth's de -  
Win - ter brings browns and grays in - deed; but when it

optional repeat between verses

23

Bm E/B A Asus A Asus A Asus A

win - ter, there\_ is green.  
win - ter, there\_ is green.  
-vo - tion, spo - ken in green.  
comes, re - mem - ber green.

# Green

♩ = 156

Ab

Ab

Db/F Eb/G

Ab

Ab

Eb/G

When win-ter's gray is on the sky, rust u - pon the  
Wav - ing de - fi - ant pine tree boughs, ce - dar need - les,  
Death may raise its voice to - day; O, but Life will  
So keep it in your win - ter store, hang its gar - land

7

Bb

Eb

Eb

Ab

Ab

Ab Eb

leaves that lie, red on the last few ber - ries cling - ing,  
stub-born and proud, hid - ing in - side the seeds of sum - mer,  
have its say, speak - ing in lov - ers and in chil - dren,  
'round the door, grant to your heart its hope - ful prom - ise,

13

Fm

Eb/G

Fm

Eb/G

Ab

brown on the branch where the bit - ter wind's sing - ing—  
deep in the root where it sleeps un - der cov - er—  
in po - ets' pens and phil - os - o - phers' vis - ions.  
fash - ion a wreath for its bles - sing up - on us.

Words: Peter Mayer, b.1963  
Music: Traditional French Carol  
Arr. Peter Mayer & Adam Podd, b.1986  
© Peter Mayer & Adam Podd  
Sing Out Love expiration December 2028

## Arrangement Permissions

One-time Adaptation

New Arrangement OK

Seek permission to arrange

Look at the Sing Out Love "Permissions" section for further explanation

Green - 2

*Intro begins here*

17

E $\flat$

A $\flat$

Cm

Fm

Fm

D $\flat$ add9

E - ven when white ob - scures the scene, still, in  
 Pa - tient - ly wait - ing there un - seen, in the  
 Life is a plan - et's dar - ing dream: Earth's de -  
 Win - ter brings browns and grays in - deed; but when it

*optional repeat between verses*

23

B $\flat$ m

E $\flat$ /B $\flat$

A $\flat$

A $\flat$ sus

A $\flat$

A $\flat$ sus

A $\flat$

A $\flat$ sus

A $\flat$

win - ter, there is green.  
 win - ter, there is green.  
 -vo - tion, spo - ken in green.  
 comes, re - mem - ber green.

# Green

♩ = 156

G G C/E D/F# G G D/F#

When win-ter's gray is on the sky, rust u - pon the  
 Wav-ing de - fi - ant pine tree boughs, ce - dar need - les,  
 Death— may raise its voice to - day; O, but Life will  
 So keep it in your win - ter store, hang its gar - land

7 A D D G G G D

leaves that lie, red on the last few ber - ries cling - ing,  
 stub-born and proud, hid-ing in - side the seeds of sum - mer,  
 have— its say, speak-ing in lov - ers and in chil - dren,  
 'round the door, grant to your heart its hope - ful prom - ise,

13 Em D/F# Em D/F# G

brown on the branch where the bit - ter wind's sing - ing—  
 deep in the root where it sleeps un - der cov - er—  
 in po - ets' pens and phil - os - o - phers' vis - ions.  
 fash - ion a wreath for its bles - sing up - on us.

Words: Peter Mayer, b.1963  
 Music: Traditional French Carol  
 Arr. Peter Mayer & Adam Podd, b.1986  
 © Peter Mayer & Adam Podd  
 Sing Out Love expiration December 2028

## Arrangement Permissions

👉 One-time Adaptation

👍 New Arrangement OK

🚫 Seek permission to arrange

Look at the Sing Out Love "Permissions" section for further explanation

# Green - 2

Intro begins here

17

D

G

Bm

Em

Em

Cadd9

E - ven when white ob - scures the scene, still, in  
Pa - tient - ly wait - ing there un - seen, in the  
Life is a plan - et's dar - ing dream: Earth's de -  
Win - ter brings browns and grays in - deed; but when it

optional repeat between verses

23

Am

D/A

G

Gsus

G

Gsus

G

Gsus

G

win - ter, there\_ is green.  
win - ter, there\_ is green.  
-vo - tion, spo - ken in green.  
comes, re - mem - ber green.

# Green

♩ = 156

Chords: G $\flat$  G $\flat$  C $\flat$ /E $\flat$  D $\flat$ /F G $\flat$  G $\flat$  D $\flat$ /F

When win-ter's gray is on the sky, rust u - pon the  
 Wav-ing de - fi - ant pine tree boughs, ce - dar need - les,  
 Death— may raise its voice to - day; O, but Life will  
 So keep it in your win - ter store, hang its gar - land

7 Ab Db Db G $\flat$  G $\flat$  G $\flat$  Db

leaves that lie, red on the last few ber - ries cling-ing,  
 stub-born and proud, hid-ing in - side the seeds of sum-mer,  
 have— its say, speak-ing in lov - ers and in chil-dren,  
 'round the door, grant to your heart its hope - ful prom-ise,

13 E $\flat$ m D $\flat$ /F E $\flat$ m D $\flat$ /F G $\flat$

brown on the branch where the bit - ter wind's sing - ing—  
 deep in the root where it sleeps un - der cov - er—  
 in po - ets' pens and phil - os - o - phers' vis - ions.  
 fash - ion a wreath for its bles - sing up - on us.

# Green - 2

Intro begins here

17

Db

Gb

Bbm

Ebm

Ebm

Cbadd9

E - ven when white ob - scures the scene, still, in  
 Pa - tient - ly wait - ing there un - seen, in the  
 Life is a plan - et's dar - ing dream: Earth's de -  
 Win - ter brings browns and grays in - deed; but when it

optional repeat between verses

23

Abm

Db/Ab

Gb

Gbsus

Gb

Gbsus

Gb

Gbsus

Gb

win - ter, there is green.  
 win - ter, there is green.  
 -vo - tion, spo - ken in green.  
 comes, re - mem - ber green.

# Green

♩ = 156

F# F# B/D# C#/E# F# F# C#/E#

When win-ter's gray is on the sky, rust u - pon the  
 Wav-ing de - fi - ant pine tree boughs, ce - dar need - les,  
 Death\_ may raise its voice to - day; O, but Life will  
 So keep it in your win - ter store, hang its gar - land

7 G# C# C# F# F# F# C#




leaves that lie, red on the last few ber - ries cling-ing,  
 stub-born and proud, hid-ing in - side the seeds of sum-mer,  
 have\_ its say, speak-ing in lov - ers and in chil-dren,  
 'round the door, grant to your heart its hope - ful prom-ise,

13 D#m C#/E# D#m C#/E# F#

brown on the branch where the bit - ter wind's sing - ing—  
 deep in the root where it sleeps un - der cov - er—  
 in po - ets' pens and phil - os - o - phers' vis - ions.  
 fash - ion a wreath for its bles - sing up - on us.

Words: Peter Mayer, b.1963  
 Music: Traditional French Carol  
 Arr. Peter Mayer & Adam Podd, b.1986  
 © Peter Mayer & Adam Podd  
 Sing Out Love expiration December 2028

## Arrangement Permissions

-  One-time Adaptation
  -  New Arrangement OK
  -  Seek permission to arrange
- Look at the Sing Out Love "Permissions" section for further explanation



Green - 2

*Intro begins here*

17

C#

F#

A#m

D#m

D#m

Badd9

E - ven when white ob - scures the scene, still, in  
Pa - tient - ly wait - ing there un - seen, in the  
Life is a plan - et's dar - ing dream: Earth's de -  
Win - ter brings browns and grays in - deed; but when it

*optional repeat between verses*

23

G#m

C#/G#

F#

F#sus

F#

F#sus

F#

F#sus

F#

win - ter, there is green.  
win - ter, there is green.  
-vo - tion, spo - ken in green.  
comes, re - mem - ber green.

# Green

♩ = 156

F F Bb/D C/E F F C/E

When win-ter's gray is on the sky, rust u - pon the  
Wav-ing de - fi - ant pine tree boughs, ce - dar need - les,  
Death\_ may raise its voice to - day; O, but Life will  
So keep it in your win - ter store, hang its gar - land

7 G C C F F F C

leaves that lie, red on the last few ber - ries cling - ing,  
stub-born and proud, hid-ing in - side the seeds of sum - mer,  
have\_ its say, speak-ing in lov - ers and in chil - dren,  
'round the door, grant to your heart its hope - ful prom - ise,

13 Dm C/E Dm C/E F

brown on the branch where the bit - ter wind's sing - ing -  
deep in the root where it sleeps un - der cov - er -  
in po - ets' pens and phil - os - o - phers' vis - ions.  
fash - ion a wreath for its bles - sing up - on us.

# Green - 2

Intro begins here

17

C

F

Am

Dm

Dm

Bbadd9

E - ven when white ob - scures the scene, still, in  
 Pa - tient - ly wait - ing there un - seen, in the  
 Life is a plan - et's dar - ing dream: Earth's de -  
 Win - ter brings browns and grays in - deed; but when it

optional repeat between verses

23

Gm

C/G

F

Fsus

F

Fsus

F

Fsus

F

win - ter, there\_ is green.  
 win - ter, there\_ is green.  
 -vo - tion, spo - ken in green.  
 comes, re - mem - ber green.

# Green

♩ = 156

E E A/C# B/D# E E B/D#

When win-ter's gray is on the sky, rust u - pon the  
 Wav-ing de - fi - ant pine tree boughs, ce - dar need - les,  
 Death may raise its voice to - day; O, but Life will  
 So keep it in your win - ter store, hang its gar - land

7 F# B B E E E B

leaves that lie, red on the last few ber - ries cling - ing,  
 stub-born and proud, hid - ing in - side the seeds of sum - mer,  
 have its say, speak-ing in lov - ers and in chil - dren,  
 'round the door, grant to your heart its hope - ful prom - ise,

13 C#m B/D# C#m B/D# E

brown on the branch where the bit - ter wind's sing - ing—  
 deep in the root where it sleeps un - der cov - er—  
 in po - ets' pens and phil - os - o - phers' vis - ions.  
 fash - ion a wreath for its bles - sing up - on us.

Words: Peter Mayer, b.1963  
 Music: Traditional French Carol  
 Arr. Peter Mayer & Adam Podd, b.1986  
 © Peter Mayer & Adam Podd  
 Sing Out Love expiration December 2028

## Arrangement Permissions

👉 One-time Adaptation

👍 New Arrangement OK

🚫 Seek permission to arrange

Look at the Sing Out Love "Permissions" section for further explanation

Green - 2

Intro begins here

17

B

E

G#m

C#m

C#m

Aadd9

E - ven when white ob - scures the scene, still, in  
Pa - tient - ly wait - ing there un - seen, in the  
Life is a plan - et's dar - ing dream: Earth's de -  
Win - ter brings browns and grays in - deed; but when it

optional repeat between verses

23

F#m

B/F#

E

Esus

E

Esus

E

Esus

E

win - ter, there is green.  
win - ter, there is green.  
-vo - tion, spo - ken in green.  
comes, re - mem - ber green.

# Green

♩ = 156

E♭

E♭

A♭/C B♭/D

E♭

E♭

B♭/D

When win-ter's gray is on the sky, rust u - pon the  
Wav-ing de - fi - ant pine tree boughs, ce - dar need - les,  
Death may raise its voice to - day; O, but Life will  
So keep it in your win - ter store, hang its gar - land

7

F

B♭

B♭

E♭

E♭

E♭ B♭

leaves that lie, red on the last few ber - ries cling - ing,  
stub-born and proud, hid-ing in - side the seeds of sum - mer,  
have its say, speak-ing in lov - ers and in chil - dren,  
'round the door, grant to your heart its hope - ful prom - ise,

13

Cm

B♭/D

Cm

B♭/D

E♭

brown on the branch where the bit - ter wind's sing - ing—  
deep in the root where it sleeps un - der cov - er—  
in po - ets' pens and phil - os - o - phers' vis - ions.  
fash - ion a wreath for its bles - sing up - on us.

Green - 2

Intro begins here

17

Bb

Eb

Gm

Cm

Cm

Abadd9

E - ven when white ob - scures the scene, still, in  
Pa - tient - ly wait - ing there un - seen, in the  
Life is a plan - et's dar - ing dream: Earth's de -  
Win - ter brings browns and grays in - deed; but when it

optional repeat between verses

23

Fm

Bb/F

Eb

Ebsus

Eb

Ebsus

Eb

Ebsus

Eb

win - ter, there\_ is green.  
win - ter, there\_ is green.  
-vo - tion, spo - ken in green.  
comes, re - mem - ber green.

# Green

♩ = 156

D D G/B A/C# D D A/C#

When win-ter's gray is on the sky, rust u - pon the  
 Wav-ing de - fi - ant pine tree boughs, ce - dar need - les,  
 Death— may raise its voice to - day; O, but Life will  
 So keep it in your win - ter store, hang its gar - land

7 E A A D D D A

leaves that lie, red on the last few ber - ries cling - ing,  
 stub-born and proud, hid - ing in - side the seeds of sum - mer,  
 have— its say, speak-ing in lov - ers and in chil - dren,  
 'round the door, grant to your heart its hope - ful prom - ise,

13 Bm A/C# Bm A/C# D

brown on the branch where the bit - ter wind's sing - ing—  
 deep in the root where it sleeps un - der cov - er—  
 in po - ets' pens and phil - os - o - phers' vis - ions.  
 fash - ion a wreath for its bles - sing up - on us.



Green - 2

Intro begins here

17

A

D

F#m

Bm

Bm

Gadd9

E - ven when white ob - scures the scene, still, in  
Pa - tient - ly wait - ing there un - seen, in the  
Life is a plan - et's dar - ing dream: Earth's de -  
Win - ter brings browns and grays in - deed; but when it

optional repeat between verses

23

Em

A/E

D

Dsus

D

Dsus

D

Dsus

D

win - ter, there\_ is green.  
win - ter, there\_ is green.  
-vo - tion, spo - ken in green.  
comes, re - mem - ber green.

# Green

♩ = 156

Db

Db

Gb/Bb Ab/C

Db

Db

Ab/C

When win-ter's gray is on the sky, rust u - pon the  
Wav-ing de - fi - ant pine tree boughs, ce - dar need - les,  
Death\_ may raise its voice to - day; O, but Life will  
So keep it in your win - ter store, hang its gar - land

7

Eb

Ab

Ab

Db

Db

Db Ab

leaves that lie, red on the last few ber - ries cling-ing,  
stub-born and proud, hid-ing in - side the seeds of sum-mer,  
have\_ its say, speak-ing in lov - ers and in chil-dren,  
'round the door, grant to your heart its hope - ful prom-ise,

13

Bbm

Ab/C

Bbm

Ab/C

Db

brown on the branch where the bit - ter wind's sing - ing—  
deep in the root where it sleeps un - der cov - er—  
in po - ets' pens and phil - os - o - phers' vis - ions.  
fash - ion a wreath for its bles - sing up - on us.

Green - 2

*Intro begins here*

17

A $\flat$

D $\flat$

Fm

B $\flat$ m

B $\flat$ m

G $\flat$ add9

E - ven when white ob - scures the scene, still, in  
 Pa - tient - ly wait - ing there un - seen, in the  
 Life is a plan - et's dar - ing dream: Earth's de -  
 Win - ter brings browns and grays in - deed; but when it

*optional repeat between verses*

23

E $\flat$ m

A $\flat$ /E $\flat$

D $\flat$

D $\flat$ sus

D $\flat$

D $\flat$ sus

D $\flat$

D $\flat$ sus

D $\flat$

win - ter, there is green.  
 win - ter, there is green.  
 -vo - tion, spo - ken in green.  
 comes, re - mem - ber green.

# Green

♩ = 156

C#

C#

F#/A# G#/B#

C#

C#

G#/B#

When win-ter's gray is on the sky, rust u - pon the  
Wav-ing de - fi - ant pine tree boughs, ce - dar need - les,  
Death may raise its voice to - day; O, but Life will  
So keep it in your win - ter store, hang its gar - land

7

D#

G#

G#

C#

C#

C# G#

leaves that lie, red on the last few ber - ries cling-ing,  
stub-born and proud, hid-ing in - side the seeds of sum-mer,  
have its say, speak-ing in lov - ers and in chil-dren,  
'round the door, grant to your heart its hope - ful prom-ise,

13

A#m

G#/B#

A#m

G#/B#

C#

brown on the branch where the bit - ter wind's sing - ing—  
deep in the root where it sleeps un - der cov - er—  
in po - ets' pens and phil - os - o - phers' vis - ions.  
fash - ion a wreath for its bles - sing up - on us.

Words: Peter Mayer, b.1963  
Music: Traditional French Carol  
Arr. Peter Mayer & Adam Podd, b.1986  
© Peter Mayer & Adam Podd  
Sing Out Love expiration December 2028

## Arrangement Permissions

👉 One-time Adaptation

👍 New Arrangement OK

🚫 Seek permission to arrange

Look at the Sing Out Love "Permissions" section for further explanation

Green - 2

*Intro begins here*

17

G#

C#

E#m

A#m

A#m

F#add9

E - ven when white ob - scures the scene, still, in  
 Pa-tient-ly wait - ing there un - seen, in the  
 Life is a plan - et's dar - ing dream: Earth's de -  
 Win-ter brings browns and grays in - deed; but when it

*optional repeat between verses*

23

D#m

G#/D#

C#

C#sus

C#

C#sus

C#

C#sus

C#

win - ter, there is green.  
 win - ter, there is green.  
 -vo - tion, spo-ken in green.  
 comes, re - mem - ber green.